



## Using Literacy Tree Information for Parents

**Literacy Tree** is an award winning, complete, book-based platform for primary schools, covering all Primary English curriculum requirements, and includes training and support. Schools use it as a framework to build their curriculum. All resources are **written by a team of Literacy Consultants**, who have a love of literature and a deep understanding of Primary English.

How our writing plans work:

<b>Thematic link</b>	Links are made through themes & conventions within significant literature
<b>Discovery Point</b>	Dramatic conventions support immersion & create a hook with the book to create resonance
<b>Literary language</b>	Literary language explicitly taught and applied in writing
<b>Embedded comprehension</b>	Reading comprehension explicitly embedded through prediction and inference
<b>Embedded grammar</b>	Explicit grammar skills for writing taught in context to be applied purposefully
<b>Spelling &amp; vocabulary</b>	Explicit spelling skills are explored and linked to vocabulary acquisition
<b>Purpose &amp; audience</b>	Distinct shorter & longer writing opportunities rather than genre-led

Literacy Tree's planning resources for writing, spelling and reading comprehension all centre around our Teach Through a Text™ pedagogy and embed all National Curriculum requirements.

Our primary focus is to motivate children to write for a range of audiences and purposes using high quality, diverse children's literature by significant authors. We do this by helping schools immerse children in a range of literary worlds and themes, heightening engagement and creating curiosity through process drama, discussion and debate. This allows them to see themselves represented, and also explore the lives and experiences of others.



*Each teacher has access to an account with downloadable plans and work samples*

### Our book choices

We choose books that are deliberately diverse, high quality and award-winning. We organise them within themes so children can make deep and lasting connections. The range includes:

**Narratives | High quality picture books | Novellas | Playscripts | Poetry collections | Non-fiction**

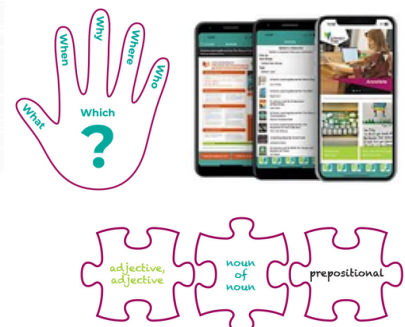


### What's included



### Teachers have access to

- Comprehension, Spelling, Home Learning resources
- An app to capture work samples and make assessments.
- Classroom Visuals
- Extra training



The Literacy Tree also blog regularly on all aspects of Literacy and primary English and provide booklists which you might find useful.